

Wild Sage (*Lantana Camara*) Flower And Leave: Bactericidal Efficacy On Bacterial Growth

Umoren, O. D. ¹

¹Pure Sciences, Abeokuta, Ogun State, Nigeria

¹Otohifedayo@gmail.com



This is an open-access article distributed under the terms of the [Creative Commons Attribution 4.0 International License](https://creativecommons.org/licenses/by/4.0/), which permits unrestricted use, distribution, and reproduction in any medium, provided the original work is properly cited.

Abstract- Plants contains myriad amount of chemical with medicinal properties. This study aim at evaluating the antibacterial efficacy of wide sage leave and flower extracted with ethanol on some bacterial growth. Flower and leave of Wide sage collected from the vicinity of Abeokuta were washed, sun-dried, grinded and extracted with 200ml of 95% ethanol solution. Extract was treated against four bacterial strains (*Proteus vulgaris*, *Pseudomonas aeruginosa*, *Staphylococcus aureus* and *Lactobacillus* sp.). Flower extract shows inhibition zone diameter of 8.00 ± 1.00 mm lower to that of leave extract with the inhibition zone diameter of 10.00 ± 1.08 mm against the growth of *Pseudomonas aeruginosa*. Flower extract also shows inhibition zone diameter of 7.75 ± 0.75 mm which is significantly lower to that of leave extract with inhibition zone diameter of 17.75 ± 0.85 mm against the growth of *Staphylococcus aureus*. The study however, indicated that ethanol extracted leave of wide sage is significantly active against *Staphylococcus aureus* and moderately active on *Pseudomonas aeruginosa* which are causal agents of urogenital, skin and health related infections.

Keywords- bactericidal, bacterial medicine, lantana camara, wild sage

I. Introduction

Folk medicine which is the utilization of herbs, shrubs and plant derived products for various therapeutic purposes has been in existence before the advent of modern medication [1]. Plant-based drugs are still a common and effective used treatment option for a wide range of diseases [2]. An estimated 80% of the world's population relies on folk medicine for their primary health treatment, therefore, production of folk medicines and the utilization of medicinal plants for the treatment of various diseases have significant economic benefits [3]. The flowering ornamental wild sage plant (*Lantana camara*) belongs to the Verbenaceae family. Lantana, Surinam tea plant, Spanish flag, and West Indian lantana are other names for wild sage plant [4]. Phytochemical screening of wild sage conducted by Kumar et al.

[4], reveals that leaf extracts of wild sage contains Alkaloid, Tannins, Flavonoids and soluble starch as major active secondary metabolite and the flower extracts reveals the presence of reducing sugar, tannins, flavanoid and soluble starch, some of which can inhibit bacterial growth. Most people (especially the underdeveloped nations and rural areas) are forced to the use of folk medication for their everyday illnesses due to a lack of communication, poverty, ignorance, and the absence of easily accessible health care facilities [5]. It is imperative to investigate the anti-bacterial efficacy of leave and flower of wild sage on bacterial growth in order to enhance our knowledge of such plant species. Hence, the reason for the study

II. Materials And Methods

A. Plant Collection And Processing

Leave and Flower of *Lantana camara* was collected from the vicinity of Abeokuta, Nigeria. To avoid contaminations, the Leave and Flower were thoroughly washed in running tap water then rinsed properly in a distilled water, sun dried and homogenized into a fine powdered using a wooden mortar and pestle.

B. Ethanolic Extraction of Leaf and Flower

20g of the powdered material was extracted using 200ml of 95% ethanol ($\text{CH}_2\text{CH}_3\text{OH}$) Solution (19:1 v/v %) and allowed to stay for the duration of 72 hours as described by Barreto et al. [6]. The extracts was filtered through a filter paper (Whatman No.1) while the removal of excess ethanol and the concentration of the extract was done by evaporating to a volume of 5ml with the use of a water bath [7]. The green and chocolate brown pure concentrated extracts was then preserved in an air-tight container respectively until usage.

C. Test Bacterial Strains

Four pathogenic bacteria usually found in urogenital and gastrointestinal tract, skin were obtained from the microbiology unit of the Medical laboratory (Kenny Ogun Laboratory Complex, Abeokuta, Nigeria). Test organisms are gram negative (*Proteus vulgaris* and *Pseudomonas aeruginosa*) and gram positive (*Staphylococcus aureus* and *Lactobacillus* sp.).

D. Media Preparation And Bacterial Culture

All glass wares used were sterilized using aseptic method. The work bench and the used areas were sterilized with 95% ethanol solution. A spirit lamp was lit up to ensure that the air of the vicinity of the work bench was free of contaminants. The media used were Nutrient agar for the culturing of the bacterial species.

E. Agar Disc Diffusion Method and Indication of Zone of Inhibition

Sterilized filter paper discs (Whatman No.1) 6 mm was saturated with filtered sterilized plant extract. The impregnated disc was then placed onto the inoculated nutrient agar medium. This was however maintained in four replicas to obtain a precise result. Prepared plates were incubated at 37°C for 24 hours [8]. Bactericidal efficacy was determined by the diameter of zonal inhibition around the impregnated disc which was measured and recorded in millimeter

(mm) with a metre rule. Zone of inhibition was indicated by the clear area around the disc which shows no bacterial growth.

F. Statistical Analysis

Data were subjected to statistical analyses One Way ANOVA using the Statistical Package for Social Sciences (SPSS) version 21.0 while graphical presentation was done using Microsoft Excel 2013 version. Mean value expressed as Mean \pm SEM at p

III. Results And Discussion

A. Result

Bactericidal efficacy of flower and leaf extract of wide sage against test bacteria indicated in Table 1 and Fig. 1, showed that the inhibition zone diameter of flower extract was 0.00 ± 0.00 mm lower than that of leaf extract which shows inhibition zone diameter of 3.50 ± 2.02 mm against the growth of *Proteus vulgaris* (plate 1). Flower extract shows inhibition zone diameter of 8.00 ± 1.00 mm lower to that of leaf extract which shows inhibition zone diameter of 10.00 ± 1.08 mm against the growth of *Pseudomonas aeruginosa* (plate 2). Flower extract shows inhibition zone diameter of 7.75 ± 0.75 mm which is significantly lower to that of leaf extract which shows inhibition zone diameter of 17.75 ± 0.85 mm against the growth of *Staphylococcus aureus* (plate 3). Flower extract shows inhibition zone diameter of 0.00 ± 0.00 mm which is equal to the leaf extract which shows inhibition zone diameter of 0.00 ± 0.00 mm against the growth of *Lactobacillus* sp. (plate 4).

B. Discussions

Based on the study, the ethanolic flower and leaf extracts show varying bactericidal efficacy against the growth of test bacterial strains. *Proteus vulgaris* is a bacteria widely known to cause urogenital infection and abnormalities [11, 12] while *Lactobacillus* sp. is a bacteria known to be friendly to the intestinal, urogenital health [13]. Observation from the study shows that flower and leaf extracts show no bactericidal efficacy against *Proteus vulgaris* and *Lactobacillus* sp. respectively. This is similar to the work of Ajiboye et al. [9] who reported that *Proteus vulgaris* exhibited the lowest inhibition zone diameter of 10 mm among the studied 14 bacterial strains when treated with the methanolic and aqueous leaf extracts of *Lantana camara*. *Pseudomonas aeruginosa* is a bacteria causing health care associated illness [14]. The flower extract shows lower inhibition zone diameter compared to that of the leaf extract which shows a higher inhibition zone diameter against the growth of *Pseudomonas aeruginosa*. *Pseudomonas aeruginosa* was sensitive to the leaf extract than the flower extract. This is in good tandem with the report made by Ajiboye et al. [9] in their research works which indicated an inhibition zone diameter of 10 mm with aqueous leaf extracts. Similarly the antibacterial studies conducted by Kumar et al. [4] on *Pseudomonas aeruginosa* using petroleum ether, diethyl ether, chloroform and acetone leaf and flower extract using tetracycline as control shows no sensitivity. *Staphylococcus aureus* is a common disease causing bacteria of public health concern [15, 16]. Flower extract shows inhibition zone diameter significantly lower to that of leaf extract with inhibition zone diameter against *Staphylococcus aureus*. This is however not in a total agreement with work of Kumar et al. [4] who reported that diethyl ether, chloroform and acetone flower extract shows inhibition zone diameter of 10 mm but leaf extract with inhibition zone diameter of 15 mm. Based on the present

investigation, the highest sensitivity to ethanolic leave extract was found in *Staphylococcus aureus* while the lowest was found in *Lactobacillus* sp., whereas the *Pseudomonas aeruginosa* shows the highest sensitivity to ethanolic flower extract while lowest was found in *Proteus vulgaris* and *Lactobacillus* sp.. The flower extract shows no significant sensitivity to the test bacterial strain which may be as a result of the concentration used for the studies. This is supported by the work of Snehal and Mohammed [10] who reported that the three studied strains of *Staphylococcus aureus* are not sensitive to 10-18 mg/ml of ethanolic flower extract but sensitive to 20-50 mg/ml of the flower extract. Although the studies was done using agar well diffusion method.

IV. Conclusion

This research study showed that wild sage leaf extract has bactericidal activity against the growth of *Staphylococcus aureus* and *Pseudomonas aeruginosa* which is a causal agent for skin, urogenital infection and associated health care infection respectively. Therefore, it may be used as treatments or co-medication for illness caused by *Staphylococcus aureus* and *Pseudomonas aeruginosa*.

Recommendations

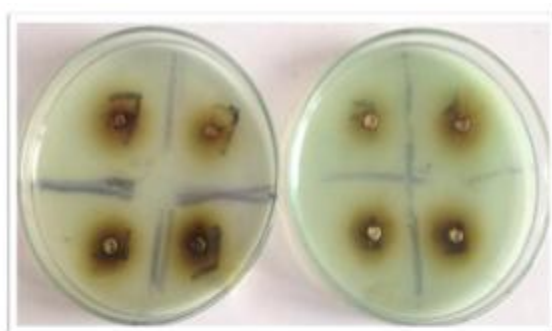
Based on the study, it is therefore recommended that higher concentration of flower extract should be used for further studies. Investigation should be carried out on the pharmacology and human toxicity of wild sage in order to ascertain the appropriate dosing.

Table 1 Inhibition Zone Diameter of Flower and Leaf Extract of Wild Sage against Growth of Test Bacteria

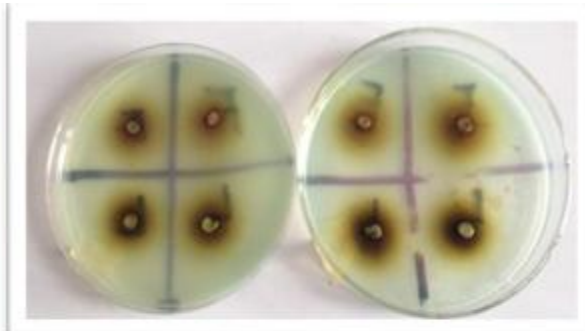
Test Bacteria	Inhibition Zone Diameter (mm)		ANOVA TABLE	
	Flower	Leaf	F	P
<i>Proteus vulgaris</i>	0.00±0.00	3.50±2.02	3.00	0.13
<i>Pseudomonas aeruginosa</i>	8.00±1.00	10.00±1.08	1.85	0.22
<i>Staphylococcus aureus</i>	7.75±0.75	17.75±0.85	77.42	0.00*
<i>Lactobacillus</i> sp.	0.00±0.00	0.00±0.00		

*Mean±SEM value is significant at $p < 0.05$

NB: Flower and Leaf Extract on Top and Bottom Rows Respectively



Plates 1: *Proteus vulgaris*



Plates 2: *Pseudomonas aeruginosa*



Plates 3: *Staphylococcus aureus*



Plates 4: *Lactobacillus*

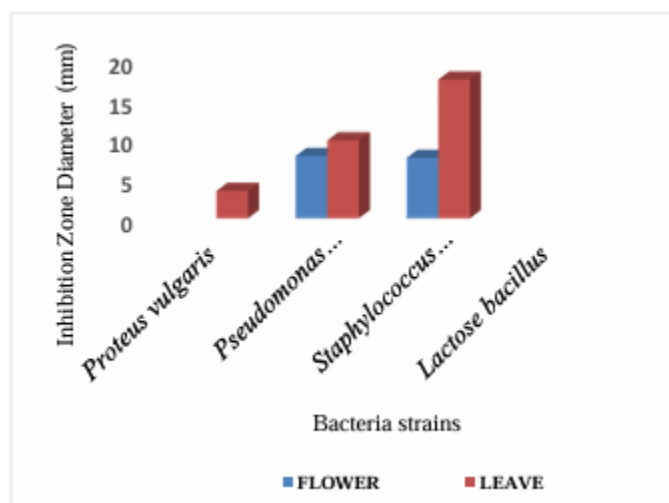


Fig. 1: Inhibition zone diameter between ethanolic extracted flower and leaf

References

- [1] Elujoba, A. A, Odeleye, O. M. and Ogunyemi, C. M. 2005.Traditional medicinal development form medical and dental health care delivery system in Africa.African journal of Traditional Complementary and Alternative Medicine. 2(1):46-61.
- [2] Ameyaw, D. O., Duker, E. and Mills-Robertson, S. D. 2005. Assessment of variation in some medicinal plant species envisaged of having the potential for the preservation of herbal products using some statistical method. Journal of Ethnopharmacol. 25(3):315-338.
- [3] Mariajancyrani, J., Chandramohan G., Brindha, P. and Saravanan, P. 2014. GC-MS Analysis of Terpenes from Hexane Extract of Lantana camara Leaves.IJAPBC. 3(1):37-41
- [4] Kumar, A., Shikha, S. and Pragati, S. 2017. Assessment of phytochemical constituents and Antimicrobial activity of Lantana camara. Biosci., biotech. Res. Asia. 14(3): 977-984
- [5] Hidayat, H., Javid, H., Ahmed, A. and Zabtakhan, S. 2011. Chemistry of Some species genus Lantana, Pak .J, 43:51-62
- [6] Barreto, F. S., Sousa, E. O., Campos, A. R., Costa, J. G. and Rodrigues, F. F. 2010.Antibacterial Activity of Lantana camaraLinn and Lantana montevidensisBrig Extracts from Cariri-Ceará, Brazil. J Young Pharm.2(1): 42-44
- [7] Jo-Ann, T., Salada, Lotis, M., Balala, Erlinda, A. Vasquez. 2015.Phytochemical and Antibacterial Studies of Lantana camaraL. Leaf Fraction and Essential Oil. International Journal of Scientific and Research Publications.5(3): 2250-3153
- [8] Sushma, J. and Arun, K. 2016.Evaluation of antibacterial activity of successive extract of lantana camaraflower. Journal of Pharmacy Research 2016, 10(8), 534-536
- [9] Ajiboye, A. A. Oyedara, O. O. Agboola, D. A. and Familola, O. T. 2014. Evaluation of Antibacterial Effects and Phytochemical Analysis of Lantana camaralinn Leaf and Berry Extracts.European Journal of Medicinal Plants 4(3): 332-341
- [10] Snehal, M. and Mohammed, R. 2014.Evaluation of antibacterial activity of ethanol extract of lantana camera flowers against methicillin resistant Staphylococcus aureus.World journal of pharmaceutical research. 3(9): 451-4
- [11] Schlecht, L.M., Peters, B.M., Krom, B.P., et al., 2006. Microbiology, 161: 168
- [12] Luciana T. R and Renata, V. 2020. Antibacterial Property and Molecular Docking Studies of TamarixRamosissima Plant Extract, Journaof Science and Arts. 1(50): 135-14
- [13] Pan, M., Hidalgo-Cantabrana, C., Goh, Y. J., Sanozky-Dawes, R. and Barrangou, R. 2020. Comparative Analysis of Lactobacillus gasseri and Lactobacillus crispatus Isolated from Human Urogenital and Gastrointestinal Tracts. Frontiers in Microbiology, 10: 1-17.
- [14] Bachta, K. E. R., Allen, J. P., Cheung, B. H. Bettina H. C. and Alan R. H. 2020. Systemic infection facilitates transmission of Pseudomonas aeruginosa in mice. Nat Commun., 11: 543. doi.org/10.1038/s41467-020 14363-4
- [15] Humphreys, H. 2012. Staphylococcus aureus: the enduring pathogen in surgery. Surgeon. 10: 357–360. doi: 10.1016/j.surge.2012.05.003
- [16] Guo, Y., Song, G., Sun, M., Wang, J. and Wang, Y. 2020. Prevalence and Therapies of Antibiotic-Resistance in Staphylococcus aureus. Frontiers in Cellular and Infection doi:10.3389/fcimb.2020.0010